



TO LET

Retail unit

Ground Floor

971 sq.ft (90.21 sq.m)

First Floor

868 sq.ft (80.64 sq.m)

14 Monmouth Walk, Cwmbran Shopping Centre

- Close proximity to Peacocks and Sports Direct
- The premises occupy a prime location on Monmouth Walk. Nearby retailers include Sports Direct, New Look and Matalan'
- 3,500 free car parking spaces

LCP.
part of M'Core

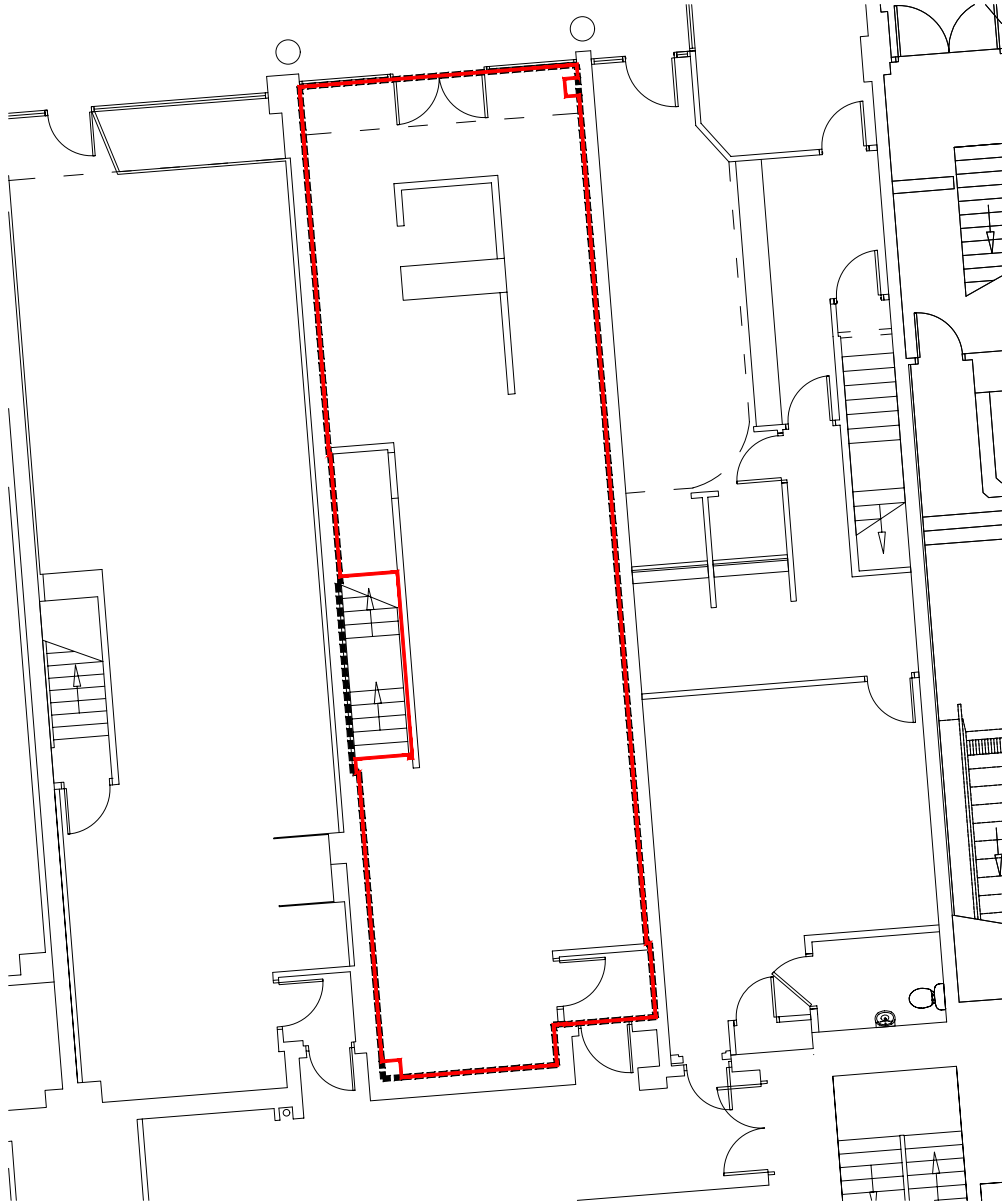
**0117 990
2200**



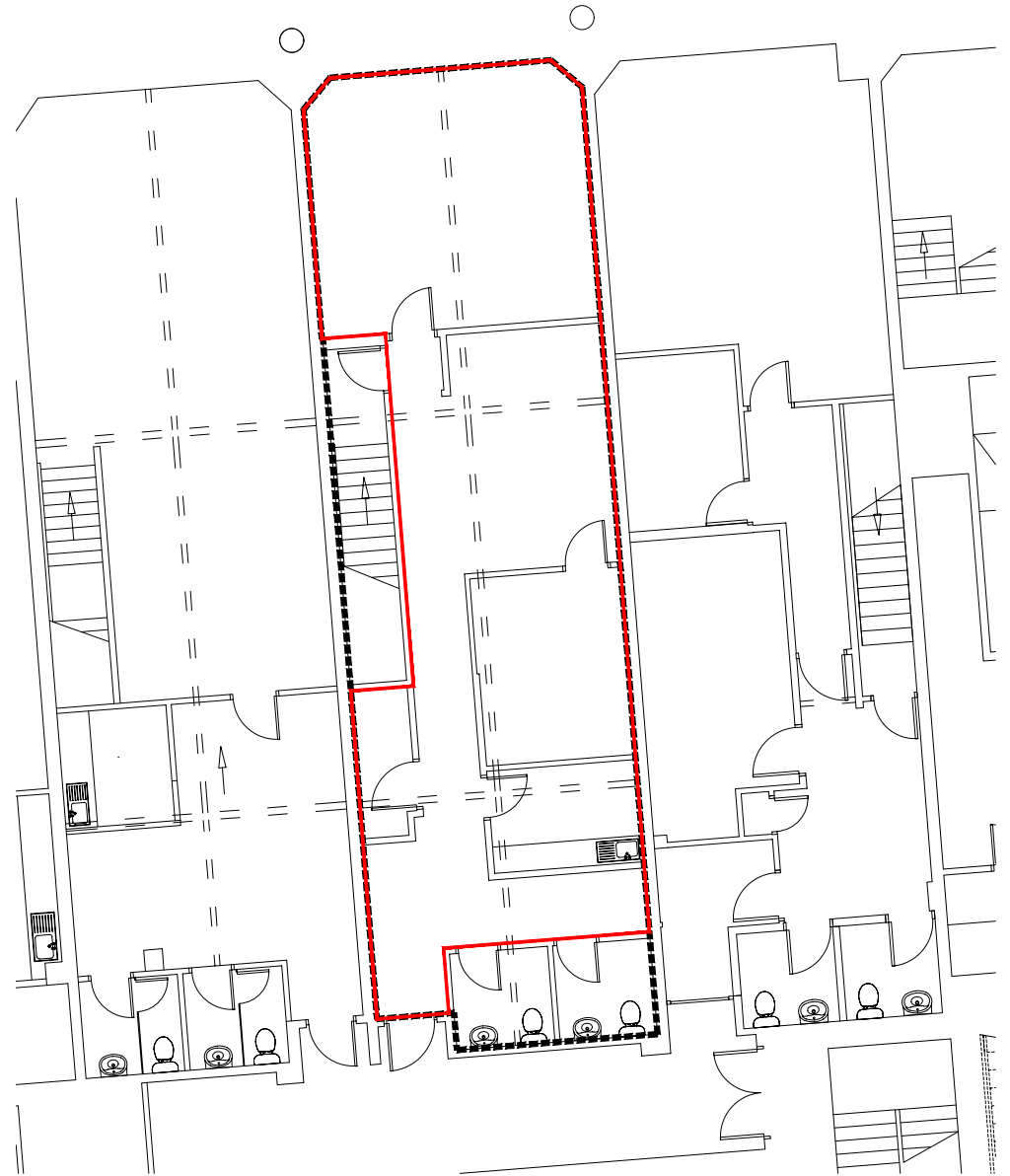
searchlcp.co.uk

14 Monmouth Walk, Cwmbran Shopping Centre

Ground Floor



First Floor



14 Monmouth Walk, Cwmbran Shopping Centre

Areas (approx. NIA)	Sq.ft	Sq.m
Ground Floor	971	90.21
First Floor	868	80.64
TOTAL	1,839	170.85

Description

The premises occupy a prime location on Monmouth Walk. Nearby retailers include Sports Direct, New Look and Matalan

Cwmbran Shopping Centre is anchored by Primark, ASDA, Dunelm, numerous national multiples and provides 3,500 free car parking spaces.

Rent

£25,000 per annum exclusive.

Rates

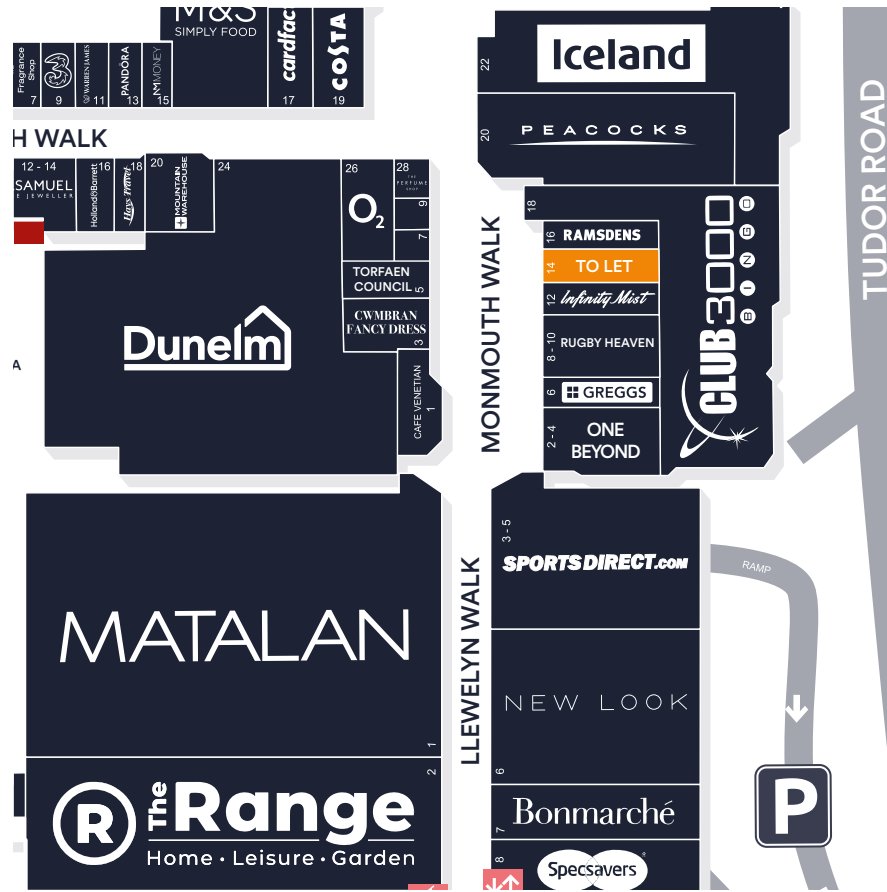
Rateable Value £28,750. Rates Payable £14,720. Interested parties are advised to contact the local authority to confirm their liabilities and any transitional relief.

Services

The unit has electricity connected.

Service Charge & Insurance

This unit participates in a service charge of £15,880 per annum. The Landlord will insure the premises the premiums to be recovered from the tenant.



Energy Performance

Further information available upon request.

Planning

It is the incoming tenant's responsibility to verify that their intended use is acceptable to the Local Planning Authority.

Legal Costs

Each party is responsible for their own legal costs in connection with the granting of a lease.

Viewing

Strictly via prior appointment with the appointed agents:



Philip Gwyther 07775 910994
philip@ejhales.co.uk



020 3058 0200
www.mcmullenre.com

Mark Crookes 07831 265072
mccrookes@mcmullenre.com

Peter Barker 07960 978795
pbarker@mcmullenre.com

Owned and Managed by



Alex Williams 07741 951843
AWilliams@lcpproperties.co.uk

MISREPRESENTATION ACT, 1967 London & Cambridge Properties Limited (Company Number 02895002) the registered office of which is at LCP House, Pensnett Estate, Kingswinford, West Midlands DY6 7NA its subsidiaries (as defined in section 1156 of the Companies Act 2006) associated companies and employees ("we") give notice that: Whilst these particulars are believed to be correct no guarantee or warranty is given, or implied therein, nor do they form any part of a contract. [We do our best to ensure all information in this brochure is accurate. If you find any inaccurate information, please let us know and where appropriate, we will correct it.] We make no representation that information is accurate and up to date or complete. We accept no liability for any loss or damage caused by inaccurate information. [This brochure gives a large amount of [statistical] information and there will inevitably be errors in it]. Intending purchasers or tenants should not rely on the particulars in this brochure as statements or representations of fact but should satisfy themselves by inspection or otherwise as to the correctness of each of them. We provide this brochure free of charge and on the basis of no liability for the information given. In no event shall we be liable to you for any direct or indirect or consequential loss, loss of profit, revenue or goodwill arising from your use of the information contained herein. All terms implied by law are excluded to the fullest extent permitted by law. No person in our employment has any authority to make or give any representation or warranty whatsoever in relation to the property. SUBJECT TO CONTRACT. We recommend that legal advice is taken on all documentation before entering into a contract. You should be aware that the Code of Practice on Commercial Leases in England and Wales strongly recommends you seek professional advice from a qualified surveyor, solicitor or licensed conveyancer before agreeing or signing a business tenancy agreement. The Code is available through professional institutions and trade associations or through the website: <https://www.rics.org/uk/upholding-professional-standards/sector-standards/real-estate/code-for-leasing-business-premises-1st-edition/>. LCP's privacy notices that apply to its use of your personal information are at www.lcpgroup.co.uk/policies. The privacy notice that applies to you will depend on the nature of your relationship with LCP, and in some cases more than one may apply to you. LCP's privacy policy giving a high level overview of how LCP approaches data protection and your personal information can be found at www.lcpproperties.co.uk/uploads/files/LCP-Privacy-Web-and-Data-Policy-May-2018.pdf.